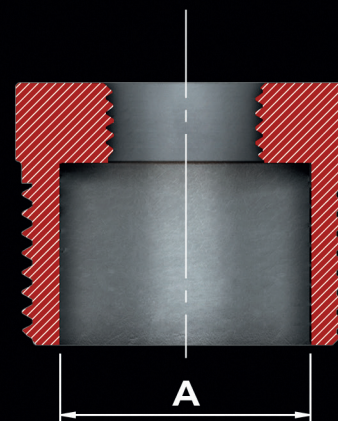
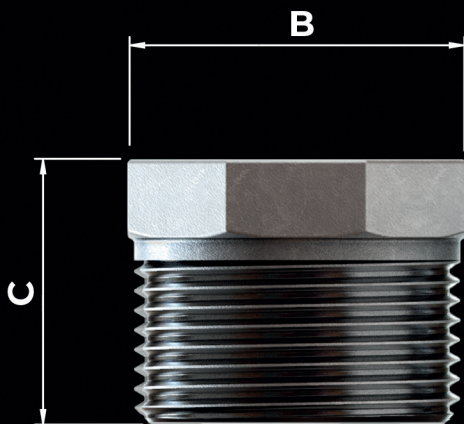
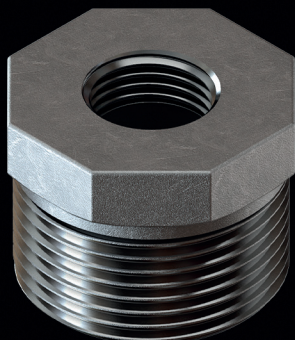


Bucha

Roscada



Ø	A	B	C	Ø	A	B	C
1/4" x 1/8"	8,4	15,0	19,0	1.1/2" x 1"	40,0	51,0	31,0
3/8" x 1/8"	11,0	19,0	20,3	1.1/2" x 1.1/4"	40,0	51,0	31,0
3/8" x 1/4"	11,0	19,0	20,3	2" x 1/2"	51,0	62,4	35,0
1/2" x 1/8"	15,0	22,5	23,7	2" x 3/4"	51,0	62,4	35,0
1/2" x 1/4"	15,0	22,5	23,7	2" x 1"	51,0	62,4	35,0
1/2" x 3/8"	15,0	22,5	23,7	2" x 1.1/4"	51,0	62,4	35,0
3/4" x 1/4"	20,5	29,0	26,0	2" x 1.1/2"	51,0	62,4	35,0
3/4" x 3/8"	20,5	29,0	26,0	2.1/2" x 1"	64,5	77,8	40,0
3/4" x 1/2"	20,5	29,0	26,0	2.1/2" x 1.1/2"	64,5	77,8	40,0
1" x 1/4"	26,0	25,5	27,0	2.1/2" x 2"	64,5	77,8	39,5
1" x 3/8"	26,0	35,5	27,0	3" x 1"	78,4	91,2	44,0
1" x 1/2"	26,0	35,5	27,0	3" x 1.1/4"	78,4	91,2	44,0
1" x 3/4"	26,0	35,5	27,0	3" x 1.1/2"	78,4	91,2	44,0
1.1/4" x 1/2"	34,5	43,6	30,0	3" x 2"	78,4	91,2	44,0
1.1/4" x 3/4"	34,5	43,6	30,0	3" x 1.1/2"	78,4	91,2	44,0
1.1/4" x 1"	34,5	43,6	30,0	4" x 2"	11,3	116,6	48,0
1.1/2" x 1/2"	40,0	51,0	31,0	4" x 2.1/2"	11,3	116,6	48,0
1.1/2" x 3/4"	40,0	51,0	31,0	4" x 3"	11,3	116,6	48,0

Matéria Prima

Aço Inoxidável ASTM
A351 CF8 (304)

Extremidades

BSP 150#

Todas as medidas poderão sofrer alterações sem aviso prévio