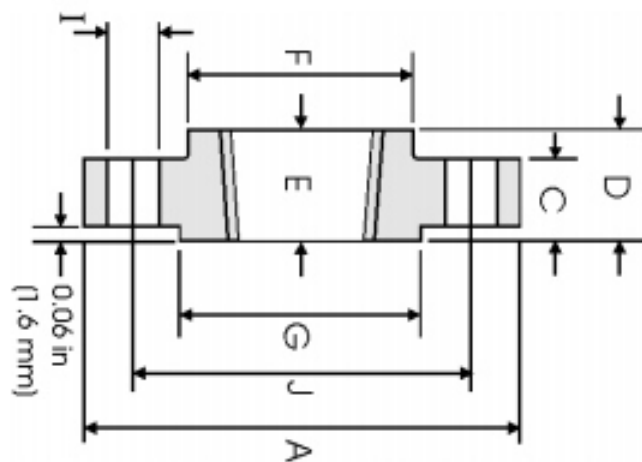


# Flange Roscado ANSI B16.5 Classe 900lbs



DN	A	B	C	D	E	F	G	Nº FURROS	I	J	Peso
1/2	120.6	23.60	22.30	31.70	22.30	38.10	35.10	4	22.30	82.50	1.74
3/4	130.0	29.00	25.40	35.00	25.40	44.40	42.90	4	22.30	88.90	2.34
1	149.3	35.80	28.40	41.10	28.40	52.30	50.80	4	25.40	101.6	3.44
1 1/4	158.7	44.40	28.40	41.10	30.20	63.50	63.50	4	25.40	111.2	3.91
1 1/2	177.8	50.50	31.70	44.50	31.70	69.85	73.15	4	28.40	123.9	5.36
2	215.9	63.50	38.10	57.15	38.10	104.6	91.90	8	25.40	165.1	9.85
2 1/2	244.3	76.20	41.10	63.50	47.70	123.9	104.6	8	28.40	190.5	13.7
3	241.3	92.20	38.10	53.80	41.10	127.0	127.0	8	25.40	190.5	11.6
4	292.1	117.6	44.40	69.85	47.80	158.7	157.2	8	31.70	234.9	19.7
5	349.2	144.5	50.80	79.25	53.80	190.5	185.7	8	35.00	279.4	31.9
6	381.0	171.4	55.60	85.80	57.15	234.9	215.9	12	31.70	317.5	41.1
8	469.9	222.2	63.50	101.6	63.50	298.4	269.7	12	38.10	393.7	70.7
10	546.1	276.3	69.85	107.9	71.40	368.3	323.9	16	38.10	469.9	101
12	609.6	328.7	79.40	117.3	76.20	419.1	381.0	20	38.10	533.4	133
14	641.3	360.4	85.70	130.0	82.50	450.8	412.7	20	41.10	558.8	153
16	704.8	411.2	88.90	133.3	85.90	508.0	469.9	20	44.40	618.9	185
18	787.4	462.0	101.6	152.4	88.90	565.1	533.4	20	50.80	685.8	258
20	857.2	512.8	107.9	158.7	91.90	622.3	584.2	20	53.80	749.3	317
24	1041.4	614.4	139.7	203.2	101.6	749.3	692.2	20	66.55	901.7	606

Dimensões em mm.

TODAS AS DIMENSÕES EM MM. PODERÁ SOFRER ALTERAÇÃO SEM AVISO PRÉVIO.