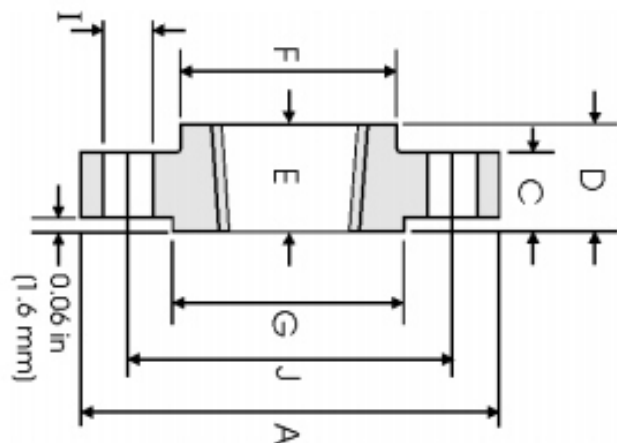


## Flange Roscado ANSI B16.5 Classe 300lbs



DN	A	B	C	D	E	F	G	Nº FURDS	I	J	Peso
1/2	95.20	23.60	14.20	22.30	15.70	38.10	35.00	4	15.70	66.55	0.64
3/4	117.3	29.00	15.70	25.40	15.70	47.70	42.90	4	19.00	82.50	1.12
1	123.9	35.80	17.50	26.90	17.50	53.80	50.80	4	19.00	88.90	1.36
1 1/4	133.3	44.40	19.00	26.90	20.60	63.50	63.50	4	19.00	98.50	1.68
1 1/2	155.4	50.50	20.60	30.20	22.30	69.85	73.15	4	22.30	114.3	2.49
2	165.1	63.50	22.30	33.20	28.40	84.00	91.90	8	19.00	127.0	2.87
2 1/2	190.5	76.20	25.40	38.10	31.70	100.0	104.6	8	22.30	149.3	4.32
3	209.5	92.20	28.40	42.90	31.70	117.3	127.0	8	22.30	168.1	5.85
3 1/2	228.6	104.9	30.20	44.40	36.50	133.3	139.7	8	22.30	184.1	7.34
4	254.0	117.6	31.70	47.70	36.50	146.0	157.2	8	22.30	200.1	9.61
5	279.4	144.5	35.00	50.80	42.90	177.8	185.7	8	22.30	234.9	12.3
6	317.5	171.4	36.50	52.30	45.90	206.2	215.9	12	22.30	269.7	15.6
8	381.0	222.2	41.10	61.90	50.80	260.3	269.7	12	25.40	330.2	24.2
10	444.5	276.3	47.70	66.55	55.60	320.5	323.9	16	28.40	387.3	34.1
12	520.7	328.7	50.80	73.15	60.45	374.6	381.0	16	31.70	450.8	49.8
14	584.2	360.4	53.80	76.20	63.50	425.4	412.7	20	31.70	514.3	69.9
16	647.7	411.2	57.15	82.50	68.30	482.6	469.9	20	35.00	571.5	88.1
18	711.2	462.0	60.45	88.90	69.85	533.4	533.4	24	35.00	628.6	109
20	774.7	512.8	63.50	95.2	73.15	587.2	584.2	24	35.00	685.8	134
24	914.4	614.4	69.85	106.4	82.50	701.5	692.2	24	41.10	812.8	201

Dimensões em mm.

TODAS AS DIMENSÕES EM MM. PODERÁ SOFRER ALTERAÇÃO SEM AVISO PRÉVIO.