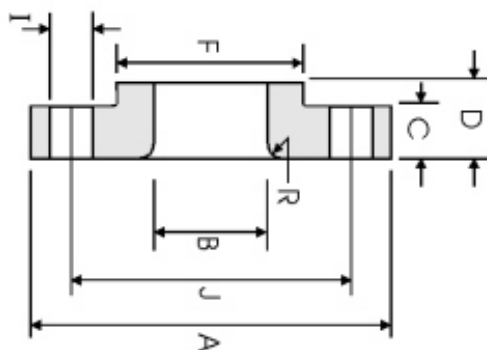


## Flange Solto (LJ) ANSI B16.5 Classe 900lbs



DN	A	B	C	D	R	F	N° FUROS	I	J	Peso
1/2	120.6	22.90	22.30	31.70	3.000	38.10	4	22.30	82.50	1.71
3/4	130.0	28.20	25.40	35.00	3.000	44.40	4	22.30	88.90	2.30
1	149.3	35.10	28.40	41.10	3.000	52.30	4	25.40	101.6	3.40
1 1/4	158.7	43.70	28.40	41.10	4.800	63.50	4	25.40	111.2	3.85
1 1/2	177.8	50.00	31.70	44.40	6.400	69.85	4	28.40	123.9	5.28
2	215.9	62.50	38.10	57.15	7.900	104.6	8	25.40	165.1	9.78
2 1/2	244.3	75.40	41.10	63.50	7.900	123.9	8	28.40	190.5	13.6
3	241.3	91.40	38.10	53.80	9.700	127.0	8	25.40	190.5	11.3
4	292.1	116.8	44.40	69.85	11.20	158.7	8	31.70	234.9	19.2
5	349.2	114.5	50.80	79.25	11.20	190.5	8	35.00	279.4	31.20
6	381.0	171.5	55.60	85.80	12.70	234.9	12	31.70	317.5	40.50
8	469.9	222.3	63.50	114.3	12.70	298.4	12	38.10	393.7	71.5
10	546.1	277.4	69.85	127.0	12.70	368.3	16	38.10	469.9	104
12	609.6	328.2	79.25	142.7	12.70	419.1	20	38.10	533.4	139
14	641.3	360.2	85.80	155.4	12.70	450.8	20	41.10	558.8	161
16	704.8	411.2	88.90	165.1	12.70	508.0	20	44.40	615.9	194
18	787.4	462.3	101.6	190.5	12.70	565.1	20	50.80	685.8	267
20	857.2	514.4	107.9	209.5	12.70	622.3	20	53.80	749.3	334
24	1041.4	616.0	139.7	266.7	12.70	749.3	20	66.55	901.7	618

Dimensões em mm.

TODAS AS DIMENSÕES EM MM. PODERÁ SOFRER ALTERAÇÃO SEM AVISO PRÉVIO.