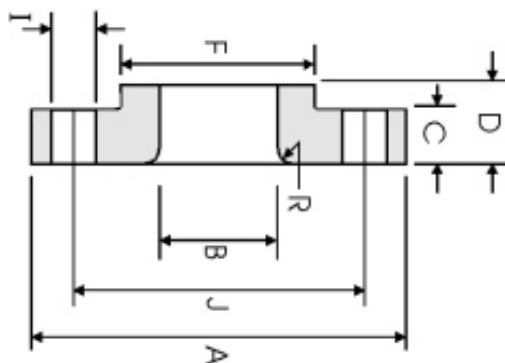


Flange Solto (LJ) ANSI B16.5 Classe 600lbs



DN	A	B	C	D	R	F	N° FUROS	I	J	Peso
1/2	95.30	22.90	14.20	22.40	3.000	38.10	4	15.70	66.55	0.72
3/4	117.3	28.20	15.70	25.40	3.000	47.80	4	19.10	82.60	1.25
1	124.0	35.10	17.50	26.90	3.000	53.80	4	19.10	88.90	1.50
1 1/4	133.4	43.70	20.60	28.40	4.800	63.50	4	19.10	98.60	2.00
1 1/2	155.4	50.00	22.40	31.75	6.400	69.85	4	22.40	114.3	2.92
2	165.1	62.50	25.40	36.60	7.900	84.10	8	19.10	127.0	3.55
2 1/2	190.5	75.40	28.40	41.10	7.900	100.1	8	22.40	149.4	5.23
3	209.6	91.40	31.75	46.00	9.700	117.3	8	22.40	168.1	6.95
3 1/2	228.6	104.1	35.10	49.30	9.700	133.4	8	25.40	184.2	8.78
4	273.1	116.8	38.10	53.80	11.20	152.4	8	25.40	215.9	14.4
5	330.2	114.5	44.50	60.45	11.20	189.0	8	28.40	266.7	24.3
6	355.6	171.5	47.80	66.55	12.70	222.3	12	28.40	292.1	28.5
8	419.1	222.3	55.60	76.20	12.70	273.1	12	31.75	349.3	43.1
10	508.0	277.4	63.50	111.3	12.70	342.9	16	35.10	431.8	70.5
12	558.8	328.2	66.55	117.3	12.70	400.1	20	35.10	489.0	86.1
14	603.3	360.2	69.85	127.0	12.70	431.8	20	38.10	527.1	100
16	685.8	411.2	76.20	139.7	12.70	495.3	20	41.10	603.3	145
18	743.0	462.3	82.60	152.4	12.70	546.1	20	44.50	654.1	177
20	812.8	514.4	88.90	165.1	12.70	609.6	24	44.50	723.9	225
24	939.8	616.0	101.6	184.2	12.70	717.6	24	50.80	838.2	318

Dimensões em mm.

TODAS AS DIMENSÕES EM MM. PODERÁ SOFRER ALTERAÇÃO SEM AVISO PRÉVIO.