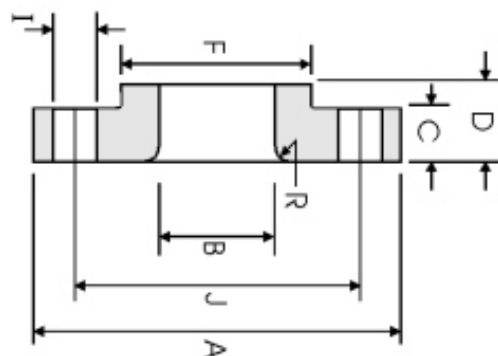


## Flange Solto (LJ) ANSI B16.5 Classe 1500lbs



DN	A	B	C	D	R	F	Nº FUROS	I	J	Peso
1/2	120.6	22.90	22.30	31.70	3.000	38.10	4	22.30	82.50	1.71
3/4	130.0	28.20	25.40	35.00	3.000	44.40	4	22.30	88.90	2.30
1	149.3	35.10	28.40	41.10	3.000	52.30	4	25.40	101.6	3.40
1 1/4	158.7	43.70	28.40	41.10	4.800	63.50	4	25.40	111.2	3.85
1 1/2	177.8	50.00	31.70	44.40	6.400	69.85	4	28.40	123.9	5.28
2	215.9	62.50	38.10	57.15	7.900	104.6	8	25.40	165.1	9.78
2 1/2	244.3	75.40	41.10	63.50	7.900	123.9	8	28.40	190.5	13.6
3	266.7	91.40	47.70	73.15	9.700	133.3	8	31.70	203.2	17.8
4	311.1	116.8	53.80	90.40	11.20	162.0	8	35.00	241.3	27.5
5	374.6	114.5	73.15	104.6	11.20	196.8	8	41.10	292.1	51.5
6	399.7	171.5	82.50	119.1	12.70	228.6	12	38.10	317.5	62.0
8	482.6	222.3	91.90	142.7	12.70	292.1	12	44.40	393.7	105
10	584.2	277.4	107.9	177.8	12.70	368.3	12	50.80	482.6	179
12	673.1	328.2	123.9	218.9	12.70	450.8	16	53.80	571.5	269
14	749.3	360.2	133.3	241.3	12.70	495.3	16	60.45	635.0	365
16	825.5	411.2	146.0	260.3	12.70	552.4	16	66.55	704.8	459
18	914.4	462.3	162.0	276.3	12.70	596.9	16	73.15	774.7	598
20	984.2	514.4	177.8	292.1	12.70	641.3	16	79.25	831.8	712
24	1168.4	616.0	203.2	330.2	12.70	762.0	16	91.90	990.6	1090

Dimensões em mm.

TODAS AS DIMENSÕES EM MM. PODERÁ SOFRER ALTERAÇÃO SEM AVISO PRÉVIO.