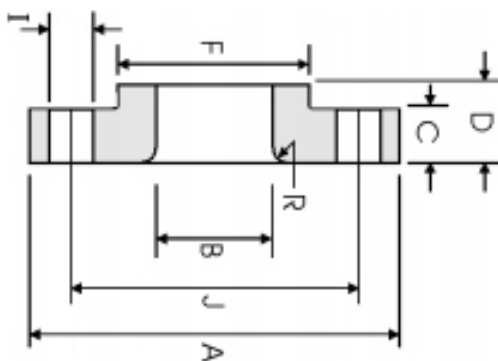


Flange Solto (LJ) ANSI B16.5 Classe 150lbs



DN	A	B	C	D	R	F	N° FURROS	I	J	Peso
1/2	88.90	22.90	11.20	15.70	3.000	30.20	4	15.70	60.45	0.38
3/4	98.60	28.20	12.70	15.70	3.000	38.10	4	15.70	69.85	0.55
1	108.0	35.10	14.20	17.50	3.000	49.30	4	15.70	79.25	0.76
1 1/4	117.3	43.70	15.70	20.60	4.800	58.70	4	15.70	88.90	1.01
1 1/2	127.0	50.00	17.50	22.40	6.400	65.00	4	15.70	98.60	1.30
2	152.4	62.50	19.10	25.40	7.900	77.70	4	19.10	120.7	2.03
2 1/2	177.8	75.40	22.40	28.40	7.900	90.40	4	19.10	139.7	3.25
3	190.5	91.40	23.90	30.20	9.700	108.0	4	19.10	152.4	3.81
3 1/2	215.9	104.1	23.90	31.75	9.700	122.2	8	19.10	177.8	4.76
4	228.6	116.8	23.90	33.30	11.20	134.9	8	19.10	190.5	5.25
5	254.0	114.5	23.90	36.60	11.20	163.6	8	22.40	215.9	6.02
6	279.4	171.5	25.40	39.60	12.70	192.0	8	22.40	241.3	7.40
8	342.9	222.3	28.40	44.50	12.70	246.1	8	22.40	298.5	12.1
10	406.4	277.4	30.20	49.30	12.70	304.8	12	25.40	362.0	16.4
12	482.6	328.2	31.75	55.60	12.70	365.3	12	25.40	431.8	26.1
14	533.4	360.2	35.10	79.25	12.70	400.1	12	28.40	476.3	34.5
16	596.9	411.2	36.60	87.40	12.70	457.2	16	28.40	539.8	44.6
18	635.0	462.3	39.60	96.80	12.70	505.0	16	31.75	577.9	48.7
20	698.5	514.4	42.90	103.1	12.70	558.8	20	31.75	635.0	61.6
24	812.8	616.0	47.80	111.3	12.70	663.4	20	35.10	749.3	86.6

Dimensões em mm.

TODAS AS DIMENSÕES EM MM. PODERÁ SOFRER ALTERAÇÃO SEM AVISO PRÉVIO.