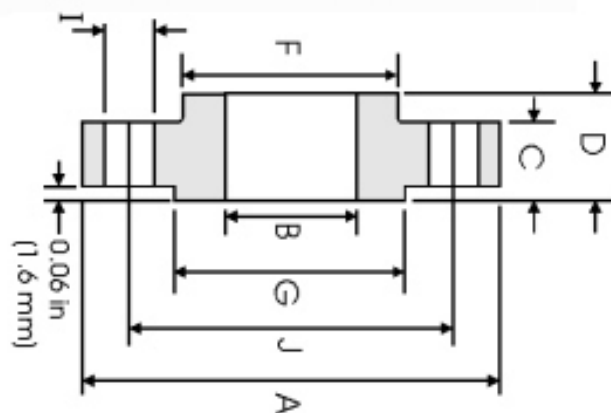


Flange Slip On (SO) ANSI B16.5 Classe 900lbs



| DN | A | B | C | D | F | G | N° FUROS | I | J | Peso |
|-------|--------|-------|-------|-------|-------|-------|----------|-------|-------|------|
| 1/2 | 120.6 | 22.40 | 22.40 | 31.70 | 38.10 | 35.10 | 4 | 22.40 | 82.50 | 1.74 |
| 3/4 | 130.0 | 27.70 | 25.40 | 35.00 | 44.40 | 42.90 | 4 | 22.40 | 88.90 | 2.34 |
| 1 | 149.3 | 34.50 | 28.40 | 41.10 | 52.30 | 50.80 | 4 | 25.40 | 101.6 | 3.44 |
| 1 1/4 | 158.7 | 43.20 | 28.40 | 41.10 | 63.50 | 63.50 | 4 | 25.40 | 111.2 | 3.91 |
| 1 1/2 | 177.8 | 49.50 | 31.70 | 44.50 | 69.85 | 73.15 | 4 | 28.40 | 123.9 | 5.36 |
| 2 | 215.9 | 62.00 | 38.10 | 57.15 | 104.6 | 91.90 | 8 | 25.40 | 165.1 | 9.85 |
| 2 1/2 | 244.3 | 74.70 | 41.10 | 63.50 | 123.9 | 104.6 | 8 | 28.40 | 190.5 | 13.7 |
| 3 | 241.3 | 90.70 | 38.10 | 53.80 | 127.0 | 127.0 | 8 | 25.40 | 190.5 | 11.6 |
| 4 | 292.1 | 116.1 | 44.40 | 69.85 | 158.7 | 157.2 | 8 | 31.70 | 234.9 | 19.7 |
| 5 | 349.2 | 143.8 | 50.80 | 79.25 | 190.5 | 185.7 | 8 | 35.00 | 279.4 | 31.9 |
| 6 | 381.0 | 170.7 | 55.60 | 85.80 | 234.9 | 215.9 | 12 | 31.70 | 317.5 | 41.1 |
| 8 | 469.9 | 221.5 | 63.50 | 101.6 | 298.4 | 269.7 | 12 | 38.10 | 393.7 | 70.7 |
| 10 | 546.1 | 276.3 | 69.85 | 107.9 | 368.3 | 323.9 | 16 | 38.10 | 469.9 | 101 |
| 12 | 609.6 | 327.1 | 79.25 | 117.3 | 419.1 | 381.0 | 20 | 38.10 | 533.4 | 133 |
| 14 | 641.3 | 359.1 | 85.80 | 130.0 | 450.8 | 412.8 | 20 | 41.10 | 558.8 | 153 |
| 16 | 704.8 | 410.5 | 88.90 | 133.3 | 508.0 | 469.9 | 20 | 44.40 | 615.9 | 185 |
| 18 | 787.4 | 461.8 | 101.6 | 152.4 | 565.1 | 533.4 | 20 | 50.80 | 685.8 | 258 |
| 20 | 857.2 | 513.1 | 107.9 | 158.7 | 622.3 | 584.2 | 20 | 53.80 | 749.3 | 317 |
| 24 | 1041.4 | 616.0 | 139.7 | 203.2 | 749.3 | 692.2 | 20 | 66.55 | 901.7 | 606 |

Dimensões em mm.

TODAS AS DIMENSÕES EM MM. PODERÁ SOFRER ALTERAÇÃO SEM AVISO PRÉVIO.