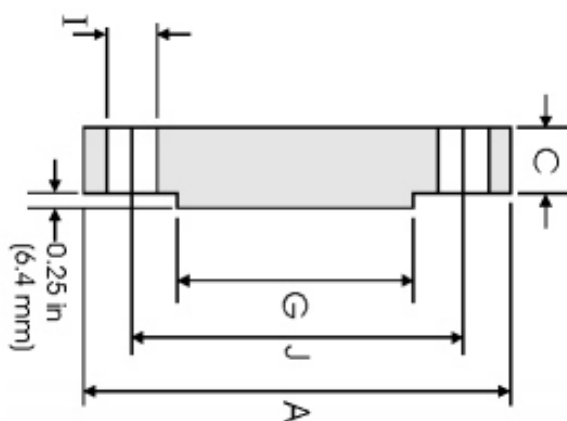


Flange Cego ANSI B16.5 Classe 600lbs



DN	A	C	G	N° FUROS	I	J	Peso
1/2	95.20	14.20	35.10	4	15.70	66.55	0.76
3/4	117.3	15.70	42.90	4	19.10	82.60	1.28
1	123.9	17.50	50.80	4	19.10	88.90	1.60
1 1/4	133.3	20.60	63.50	4	19.10	98.60	2.23
1 1/2	155.4	22.30	73.15	4	22.40	114.3	3.25
2	165.1	25.40	91.90	8	19.10	127.0	4.15
2 1/2	190.5	28.40	104.6	8	22.40	149.4	6.13
3	209.5	31.70	127.0	8	22.40	168.1	8.44
3 1/2	228.6	35.00	139.7	8	25.40	184.2	11.0
4	273.1	38.10	157.2	8	25.40	215.9	17.3
5	330.2	44.50	185.7	8	28.40	266.7	29.4
6	355.6	47.80	215.9	12	28.40	292.1	36.1
8	419.1	55.60	269.7	12	31.75	349.3	58.9
10	508.0	63.50	323.9	16	35.10	431.8	97.5
12	558.8	66.55	381.0	20	35.10	489.0	124
14	603.3	69.85	412.8	20	38.10	527.1	151
16	685.8	76.20	469.9	20	41.10	603.3	214
18	743.0	82.60	533.4	20	44.50	654.1	272
20	812.8	88.90	584.2	24	44.50	723.9	349
24	939.8	101.6	692.2	24	50.80	838.2	533

Dimensões em mm.

TODAS AS DIMENSÕES EM MM. PODERÁ SOFRER ALTERAÇÃO SEM AVISO PRÉVIO.